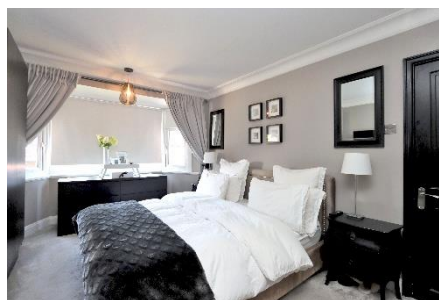


“Your move is our motivation”

**Forest Approach, Woodford Green, IG8  
Four Bedroom Semi Detached House**

**Monthly Rental Of £3,850**



This stunning and beautifully presented four bedroom home in a very sought after location close to good schools, the Central Line and local amenities. The property has high ceilings with ornate covings, stunning feature fireplaces to two of the bedrooms, the lounge and the living room. Underfloor heating to the huge open plan bespoke fitted kitchen / living / dining room and the ground floor wet room shower. The property is almost 1,500 square feet in size, it is finished to an extremely high standard throughout. This property also comes unfurnished.

- A spacious and amazing family home which comes unfurnished
- A stunning and beautifully presented spacious four bedroom home in a very sought after location
- The property is close to good schools, two Central Line stations and excellent local amenities
- An amazing open plan bespoke fitted kitchen / living / dining room measuring 32' 11" x 23' 8" in size
- The lounge is beautifully finished with a feature fireplace and large bay window to the front aspect
- On the ground floor there is also a wet room style shower and a fitted utility cupboard

